

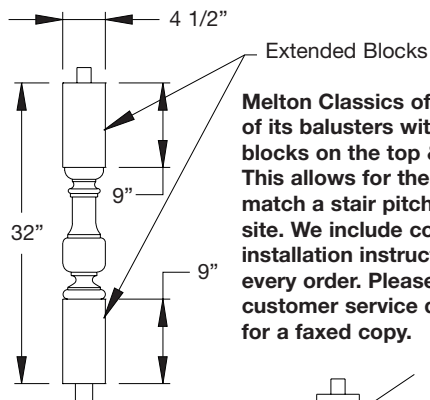


BALUSTRADE SYSTEMS

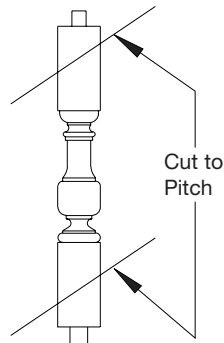
Classically designed Architectural UrethaneTM balustrades are available in a wide variety of sizes and designs to enhance the beauty of any project. Ideal for elevated applications such as balconies and widow's walks where excess weight is a concern, Architectural UrethaneTM balustrades are just as at home on the patio, pool deck or porch. Constructed from high density urethane and structural piping, durable Architectural UrethaneTM balustrades are BOCA compliant, and designed to meet local baluster spacing and rail height codes. In addition to our large inventory of standard designs, custom balusters can be produced upon request. Radius railings are also available.

In addition to our Architectural UrethaneTM balustrade system, we also offer balustrades in MeltonStoneTM cast stone, MarbleTexTM synthetic stone, & DuraClassicTM marble/resin composite, See Sweet's 05720 for more inf.

Extended balusters for Stair Applications



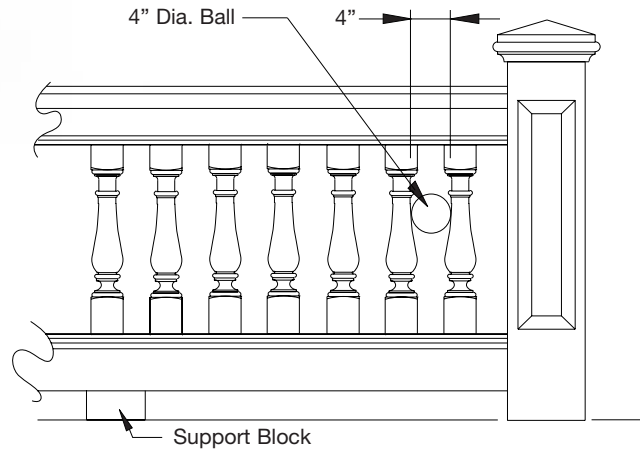
If you're looking for a baluster that's not in our catalog. Fax us a detailed drawing and we'd be happy to quote on it. Fax (770) 962-6988.



NOTE: When cutting baluster to pitch, do **NOT** cut through pipe. Allow pipe to extend a min. of 1 1/2" beyond pitch.

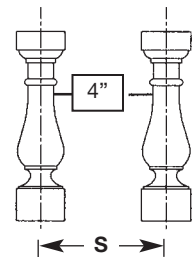
Balustrade Systems and Building Codes

NOTE: Melton Classics recommends checking with your local building inspector before ordering your railing system.



Railing Codes

It is important to check with your local building inspector regarding the code for baluster spacing and railing height. Most states are using a 4" code for balusters, which means that a 4" ball cannot pass between the balusters. We provide you with an on center spacing for each baluster based on this code. Some balusters do not meet code and can only be used in areas that are not considered accessible to the public. Example: A portico or front balcony that does not have an operating window or door leading to it that could be used in case of fire. ***It is imperative that you check with your building inspector before ordering your railing system.***



S = Spacing on center

IMPORTANT - Please Read

Melton Classics will in no way be held responsible or liable for any railing installation regardless of the code requirements. All railing installations are the sole responsibility of the balustrade installer.



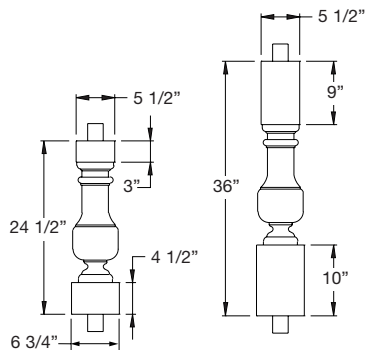
BALUSTRADE SYSTEMS

7 1/4" Railing System

Balusters



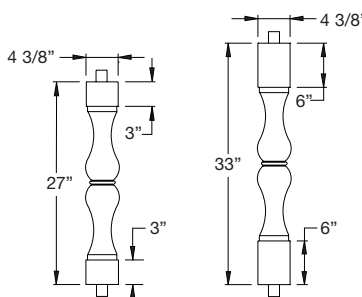
S = 6 1/4"



250-300-24 Baluster 250-300-36 Baluster



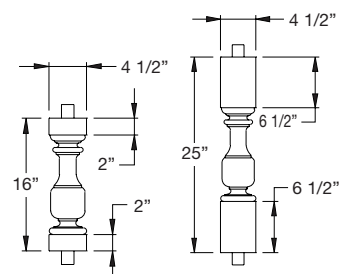
S = 5 7/8"



250-310-27 Rd. Baluster 250-310-33 Rd. Baluster



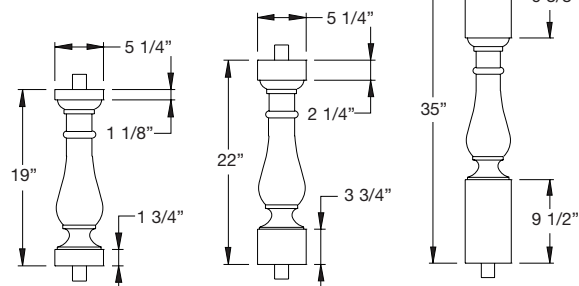
S = 5 1/4"



250-320-16 Baluster 250-320-25 Baluster



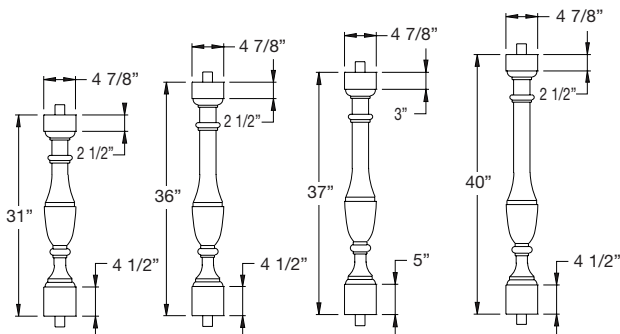
S = 6 3/4"



250-330-19 Baluster 250-330-22 Baluster 250-330-35 Baluster



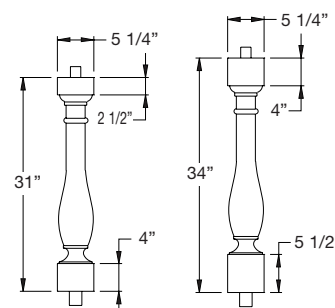
S = 6 1/2"



250-340-31 Bal. 250-340-36 Bal. 250-340-37 Bal. 250-340-40 Bal.



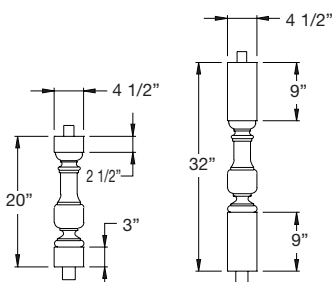
S = 6 3/4"



250-350-31 Baluster 250-350-34 Baluster



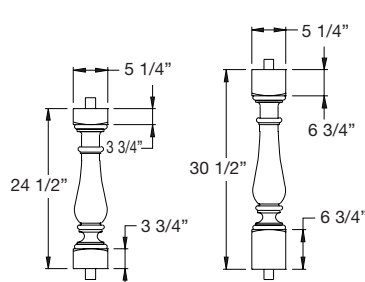
S = 5 1/4"



250-360-20 Baluster 250-360-32 Baluster



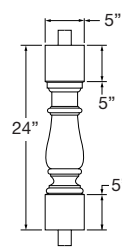
S = 6 3/4"



250-370-24 Baluster 250-370-30 Baluster



S = 7 1/4"



250-180-24 Baluster

balustrade systems

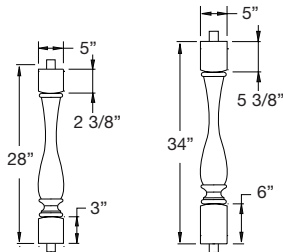
BALUSTRADE SYSTEMS

7 1/4" Railing System (Cont'd)

Balusters (Cont'd)



S = 6 1/4"



250-380-28 Baluster 250-380-34 Baluster

IMPORTANT

- ▶ Rails are joined to newel posts and not to each other. Other applications will not be covered under the warranty.
- ▶ On spans of more than 8 feet, we recommend installing support blocks.
- ▶ Installation kits are available to join rails to newel posts. (see page 17)
- ▶ 251-300 & 251-305 Rails are made with PVC pipe that meets BOCA Codes.
- ▶ Railings can be pre-drilled. See page 16.

Curved Railings

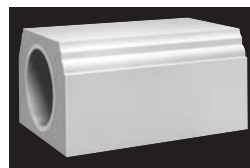
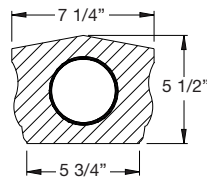
- ▶ Curved railings available by quotation. See page 16 for stock sizes and instructions.

Top & Bottom Rails

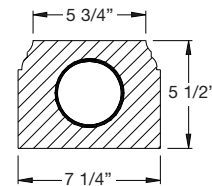
AVAILABLE IN 8', 10' & 12' LENGTHS



251-300-8 Top Rail
251-300-10 Top Rail
251-300-12 Top Rail



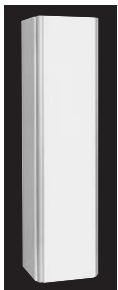
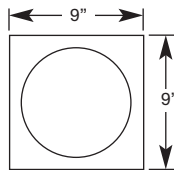
251-305-8 Bottom Rail
251-305-10 Bottom Rail
251-305-12 Bottom Rail



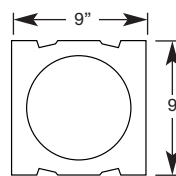
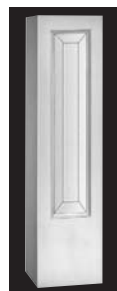
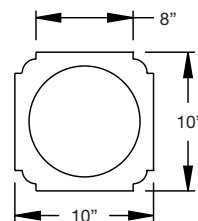
Newel Posts



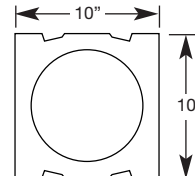
252-300 Newel Post
Ht.: 48" Width: 9"sq.



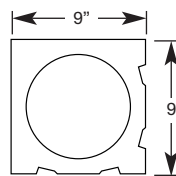
252-310 Newel Post
Ht.: 48" Width: 10"sq.



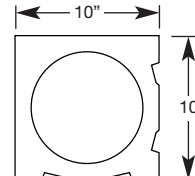
No. 252-320
Straight Newel



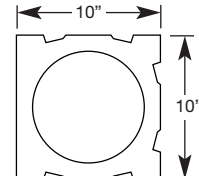
No. 252-340
Straight Newel



No. 252-330
Corner Newel



No. 252-350
Corner Newel



No. 252-360
3 Panel Newel

252-320 Newel Post
Ht.: 48" Width: 9"sq.

252-330 Newel Post
Ht.: 48" Width: 9"sq.

252-340 Newel Post
Ht.: 48" Width: 10"sq.

252-350 Newel Post
Ht.: 48" Width: 10"sq.

252-360 Newel Post
Ht.: 48" Width: 10"sq.

Newel Caps



253-300 Cap 9 5/8" Sq.
253-310 Cap 10 3/8" Sq.



253-320 Cap 9 5/8" Sq.
253-330 Cap 10 3/8" Sq.



253-340 Cap 9 5/8" Sq.
253-350 Cap 10 3/8" Sq.



253-360 Cap 11 1/2" Sq.